

# RAIL REPORT

January 2010 • No. 597



Rocky Mountain Railroad Club • Rocky Mountain Railroad Historical Foundation

## Cow Catchers – Railroading At The Denver Stock Yards Reunion: The Mount Pleasant Experience

Presented by Bryan Bechtold  
January 12th, 2010 • 7:30 PM

A double feature to start the year! While cattle are no longer transported by rail in Denver, the stock yards remain an interesting place for rail action. The second program will be about the Old Threshers and Settlers Reunion event, an eclectic gathering of Americana, steam and diesel tractors, narrow gauge railroading, and trolleys.

Please come join us for an enjoyable, educational evening at Christ Episcopal Church at 2950 South University Boulevard, University at Bates, where there is plenty of off street parking at the rear of the complex. Enter into Barnes Hall, where we hold the monthly meetings, on the mid-south side doors. Please bring a guest. **All programs are intended to provide an educational experience on railroading. The general public is welcome to attend. There is no charge for this meeting.**

Please note: Due to scheduling changes at the Church, beginning in April our meeting night will change.

### RMRR Calendar

February 9th	Meeting, with program "Steam Locomotives of the Katy Railroad"
March 9th	Meeting, with program to be announced soon.
April	Meeting, with program to be announced soon.

Due to circumstances beyond our control, programs and dates are subject to change without notice. Please contact Joe McMillan at [jmcmillan20@comcast.net](mailto:jmcmillan20@comcast.net) or phone 303-456-4564 with program ideas.



One possibility under discussion is a new Trolley Museum with a relocated Moffat station adjacent to the Platte Valley Trolley trackage.  
– Rendering courtesy of Nick Antonopoulos, praXarc.

---

## December Annual Meeting Election Results

The results of the elections at the annual meeting on December 8, 2009, follows:

Secretary – Roger Sherman  
Treasurer – Keith Jensen  
Vice President – Pat Mauro  
President – Dave Schaaf

Current Board of Directors members returning for one more year:

John Charles  
Andy Dell  
Don Hulse

With interurban car #25 moving to new ownership, the Board voted to leave the position of Vice-President of Projects vacant until the need arises or there is a change in the by-laws.

New Board of Directors members for 2010 starting a two year term:

Mike Tinetti  
Dave Goss  
Dave Wagner

---

## Renewal Time

Renewals for 2010 are due. There will be no increase in dues. Renewal applications were enclosed in the November and December *Rail Report*. Please fill out the information requested on the form and mail to address provided.

Please renew now to keep your seniority. The re-sequencing of seniority numbers will be performed in February.

---



A possible scene shows No. 25 passing a new station on the Platte Valley Trolley trackage at a new Trolley Museum.

– Rendering courtesy of Nick Antonopoulos, praXarc.

---

## From The President

By Dave Schaaf

### Happy New Year

In last month's *Rail Report*, we let you know about two different offers for the future of Denver & Intermountain car number 25. This has been a complicated discussion, and has now evolved into something bigger than any of the several groups concerned. As this issue goes to print, we anticipate receiving a joint proposal from the Denver Rail Heritage Society and the City of Lakewood within a few days. This proposal is being put together with the cooperation of the DRHS and the Rocky Mountain Railroad Club, the cities of Lakewood and Denver, the Regional Transportation District, and other regional and historic groups. We will keep you up to date as the plan unfolds.

The Board of Directors would like to thank Darrell Arndt for his many years of leadership on the restoration

of car #25. This rebuilding process was more involved than most of us will ever know.

The owners of the depot in Como, Colorado, have been advised that they have been approved by the State Historical Fund for the next phase of restoration. This basically involves finishing the structural framing repairs and a new roof, to match the original. They have a presentation to the Colorado Preservation Annual Conference in February.

In other narrow gauge news, Pennsylvania state rep. Mike Fleck's web site has an announcement, dated in early December, saying that the state is directing just over \$1-million to the East Broad Top RR for track rehabilitation in Mount Union. While the work is aimed at bringing standard-gauge freight service to a Mount Union industrial park, Representative Fleck's announcement

## From The President



One possible location for a new Trolley Museum with a relocated Moffat station adjacent to the Platte Valley Trolley trackage.

– Rendering courtesy of Nick Antonopoulos, praXarc.

also says that, from a tourism perspective, the track work “brings us nearly a mile and half closer to reopening the EBT from Rockhill to Mt. Union.”

Five regional planning agencies throughout the Rocky Mountain and Intermountain West formally announced the formation of the Western High Speed Rail Alliance (WHSRA), which will work to support the creation of a high-speed rail system in the Western United States.

“The members of the Western High Speed Rail Alliance share a vision of high-speed rail that provides efficient, cost-effective options for both passenger

and freight customers,” said Jacob Snow, chairman for the WHSRA. “We believe implementation of a regional high-speed rail plan for the Rocky and Intermountain West is critical to the development of a national high-speed rail system. Corridors must be studied now to lay the groundwork for additional development.”

Included in the alliance are the following planning agencies: The Denver Regional Council of Governments (the greater Denver area), the Maricopa Association of Governments (the greater Phoenix Area), Regional Transportation Commission of Southern Nevada (Las Vegas, Nevada), the Regional Transport-



## From The President



One possible location for a new Rail Heritage Center and a relocated Moffatt station is adjacent to the RTD Oak Street Station with track through the new Oak Street Promenade. – Rendering courtesy of Nick Antonopoulos, praXarc.

tation Commission of Washoe County (Reno, Nevada), and the Utah Transit Authority (Salt Lake City, Utah).

The WHSRA is prepared to request \$50 million from the reauthorization of the Surface Transportation Act that Congress is expected to consider this year.

“Funding these studies is essential for the development of a national high-speed rail plan. We look forward to working with Congress and other lawmakers to assure that these studies are adequately funded,” said Snow.

Included in a national plan The Western High Speed Rail Alliance envisions a Denver to Los Angeles corridor via a high-speed rail network with regional “hubs” in Las Vegas, Salt Lake City, Denver and Phoenix as well as linkages

from Denver to Salt Lake City to Reno and ultimately connection to San Francisco.

“Connecting the Western United States with a robust rail network will be a major step towards reducing air traffic and highway congestion, while in turn increasing interstate highway capacity for goods movement and improving air quality by reducing emissions,” concluded Snow.

The WHSRA hopes to add both public and private sector members to their alliance in order to assist in developing future corridors that will be built over the next 20 years.

Club members may contact me at 303-988-3456 or ds5280@comcast.net.

## People At The December Annual Meeting



From left, Lakewood Councilman Ed Peterson, Dave Schaaf, Denver Rail Heritage Society President Tom Abbott. – Photo © Jean Gross.

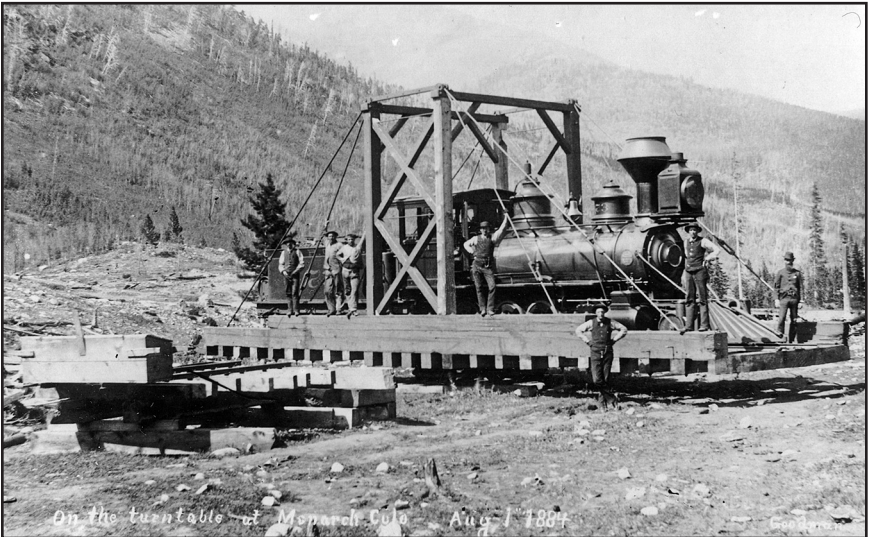


From left, Bernie Watts, Ed Gerlits and Dave Schaaf.  
– Photo © Jean Gross.

## Narrow Gauge Locomotive Photo Gallery



D&RG Engine 51, 2-8-0, Class 56, named "South Arkansas" at Crested Butte, Colorado, in the 1890s. At this time No. 51 was equipped with a footboard and back up headlight indicating it was assigned to yard switching duties. This locomotive was vacated from the roster on June 30, 1908.



D&RG Engine 73, 2-8-0, Class 56, named "Sneffels" is shown on the newly built "Gallows" turntable at Monarch, Colorado, on August 1, 1884. This locomotive was sold to the D&RGW (Utah) Railway on July 12, 1886; Then Rio Grande Western No. 73, in 1891 it was sold to the Rio Grande Southern and renumbered No. 29. In 1900 the engine was sold to the Morenci Southern Railway in Arizona and was their No. 1. – Two photos from the James L. Ehernberger collection.



## Current Railroad Happenings



The new Ski Train equipment is operated by the San Luis & Rio Grande and will be powered by a pair of EMD SD90MAC units. Units 115 and 116 were at the former Rio Grande North Yard on December 9, 2009. – Photo © 2009 by Dave Schaaf



BNSF 8842 was speeding south (RR east) on the Orin subdivision near Wright, Wyoming, on December 17, 2009, passing under the conveyor for the west Black Thunder mine loadout.

– Photo © 2009 Dave Schaaf.



## Current Railroad Happenings



San Luis & Rio Grande unit 116 was at the former Rio Grande North Yard on December 9, 2009, waiting to be moved to Union Station before its first run pulling the new Ski Train to Winter Park, Colorado.

– Photo © 2009 by Dave Schaaf

## Current Railroad Happenings



Light snow was falling as UP SD70ACE 1989, Rio Grande Heritage unit, rolled west on main three at Pecos Street departing North Yard, Denver for Tabernash, Colorado, on December 6, 2009. Between UP 1989 and 8221 was crew caboose UPP 430. – Photo © 2009 by Chip.

## Current Railroad Happenings



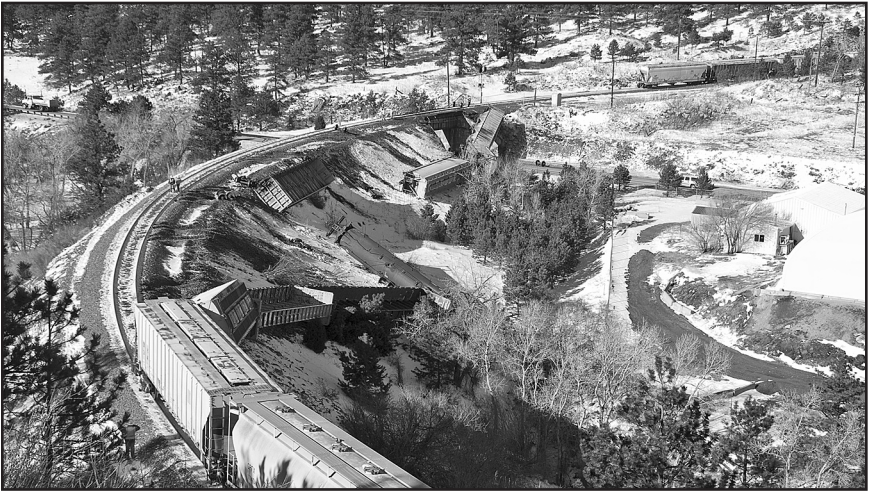
The Union Pacific Railroad crew caboose UPP 430 assigned to “snow bus” duty departed North Yard, Denver, for Tabernash, Colorado, on December 6, 2009. The caboose was Southern Pacific 4750, class C-50-9 bay window built by International Car Company of Kenton, Ohio, photographed west of Utah Junction, Colorado. – Photo © 2009 by Chip.



Amtrak’s California Zephyr, train 5, kicked up freshly fallen snow departing Denver, on time passing UP GP40-2 1363 an Xcel Energy Cherokee Generating Station (trainmen call it Public Service) coal empty at North Yard, on December 6, 2009. The 8-car California Zephyr had Amtrak 100 and 206 up front. The train was approaching Interstate 70 highway overpass on Union Pacific rails that frigid morning. – Photo © 2009 by Chip.



## Current Railroad Happenings

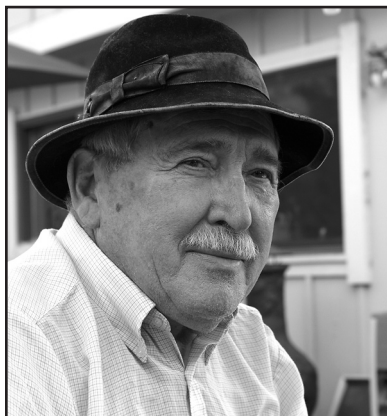


UP 6821 was winding up Coal Creek Canyon nearing tunnel one when milepost 22.6 detector warned “dragging equipment” and the train went into emergency. Conductor Mike came on radio notifying dispatcher 82 he had a major derailment with a car (Missouri Pacific 722628 – a covered hopper) on highway around milepost 23. Rear 57 cars and DPU were blocking Blue Mountain Drive grade crossing about 11:30 AM. Cars were on their sides – four covered hoppers, three center beam flatcars and one empty tank car. The other four derailed cars were covered hoppers on north side of highway 72 overpass which derailed but remained upright. UP 6821 with 25-cars pulled away from derailment site to Plain about 2:00 PM. About 2:45 PM coal empty power UP 5799 pulled rear portion (57-cars and DPU) back to Denver clearing Blue Mountain Drive about 3:00 PM on December 10, 2009. – Two photos © 2009 by Chip.



*In Remembrance*  
**James L. (Jim) Ozment**

We are sorry to report the unexpected death of James L. Ozment on December 7th. He was a current Rocky Mountain Railroad Club member and had presented several excellent programs for Club meetings. Jim was an avid rail fan, photographer, author, and collector. Many of us spent wonderful afternoons enjoying his extensive garden railway, "Casa del Sol."



Born May 17, 1935, Jim grew up in St. Louis and graduated with a BA from Washington and Lee University. After graduation he worked for the Denver Rio Grande Western for 40 years, in the Maintenance of Way Dept, Burnham laboratory and in the Chief Engineers Office. After retirement he worked as a railroad consultant for tourist railroad operations.

Jim was an avid stamp collector and member of the Rocky Mountain Philatelic library, which he helped to found. He was a life member of the Colorado Railroad Museum, where he served as a Member of the Advisory Board and Board of Trustees from 1989 to 2009.

An accomplished photographer, he and his son, Doug, had been working on digital archiving and presenting his extensive collection of railroad photography online at [www.westernrailimages.com](http://www.westernrailimages.com).

*In Remembrance*  
**Herb Votaw**

We received word that Herb Votaw died in 2009. Herb was a member of the Club for many years before he moved from his long time home on Xavier Street.

Herb was a very talented modeler and donated his collection of spectacular 1-inch to the foot locomotive and car models to the Colorado Railroad Museum where they are currently on display.

## Colorado Railroad Museum 2010 Scheduled Special Operation Days

For information call 303-279-4591

<http://www.coloradorailroadmuseum.org/event-listings>

### SCFD Free Days:

January 9, March 20, November 13

April 3                      Bunny Express Train  
May 8 & 9                  Mother's Day Goosefest  
June 26 & 27

GermanFest – Presented by MillerCoors  
July 24 & 25    Buffalo Bill Wild West Days  
August 21                      Wine Train  
August 21 & 22                  KidFest

### Day Out With Thomas

September 11, 12, 18, 19, 25, & 26

October 30 & 31              Trick or Treat Train  
November 27 & 28

Thanksgiving Goosefest  
December 4, 11, 12, 18  
Santa Express Train

### Saturday Special:

Ride in Goose 7 or in a 19th century passenger coach pulled by Locomotive No. 4.  
Rides begin at 10:00 AM Every Saturday,  
Weather Permitting

Adult / Senior Fare: \$4 per ride

Child Fare: \$2 per ride

### Operate A Locomotive:

Call for reservations to operate Locomotive No. 4. \$150 puts you in the Engineers seat of this diesel for an hour!

Rocky Mountain Railroad Club Members in good standing, and upon presentation of a current membership card, are entitled to free admission. Members are invited to join the Colorado Railroad Museum (a Museum membership provides certain merchandise discounts), and members may participate in restoration or other maintenance programs as volunteers.

Please contact the volunteer coordinator at the CRRM, telephone 303-279-4591.

## Intermountain Chapter, NRHS

### 2010 Event Schedule

For information call 303-298-0377

<http://www.cozx.com/nrhs>

### Twelfth Annual Jeffco Train Show

Saturday, January 30, 2010

Jefferson County Fairgrounds

Our annual modal railroading and memorabilia extravaganza will be held at the Jefferson County Fairgrounds Exhibit Hall in Golden Colorado at 15200 W. 6th Avenue. This is a one day event.

**Early-bird access to vendors:** From 7:15 AM to 9:00 AM. Admission is \$10 and good for all day.

**Public Show Time:** From 9:00 AM to 4:00 PM. Admission: \$5.00 per adult; \$1.00 children 5 thru 12; under 5 free with a \$10.00 Family Maximum.

There will be door prizes.

The Snack Bar will be open for breakfast with coffee, tea, hot chocolate, and donuts! Hot lunch and snacks also will be available!

## **Publishers Statement — Rocky Mountain Rail Report**

The Rocky Mountain Rail Report (ISSN 1040-9223) is published by the Rocky Mountain Railroad Club and the Rocky Mountain Railroad Historical Foundation.

First class postage paid at Denver, Colorado.

Postmaster, send address changes to:

Rocky Mountain Rail Report, PO Box 2391, Denver, CO 80201-2391

### **Club Information**

Rocky Mountain Railroad Club  
PO Box 2391  
Denver, CO 80201-2391  
Web: <http://www.rockymtnrrclub.org>

### **Club and Foundation Officers**

President	Dave Schaaf
Vice President	Pat Mauro
Secretary	Roger Sherman
Treasurer	Keith Jensen

### **Club and Foundation Directors**

John Charles, Andy Dell, Don Hulse, Mike Tinetti, Dave Goss , Dave Wagner

### **Membership Information**

Membership in the Rocky Mountain Railroad Club may be obtained by sending the annual dues to the Club address listed above.

Regular membership dues are \$35.00. Overseas regular membership dues are \$45.00.

Contributing membership is \$50.00. Sustaining membership is \$70.00.

Patron membership is \$100.00. Golden membership is \$500.00.

An associate membership for spouses and children is \$25.00 additional.

Members joining after April may send a payment of \$3.00 for each month remaining in the year.

Members of the Rocky Mountain Railroad Club are also members in the Rocky Mountain Railroad Historical Foundation, the non-profit arm of the Rocky Mountain Railroad Club.

### **Board Meetings**

Members are always welcome to attend any board of directors meeting. Please contact any Club officer for the date, time and location.

### **Newsletter Contributions**

Newsletter contributions and items for publication should be sent to:

Bruce Nall, Editor  
Rocky Mountain Rail Report  
PO Box 620579  
Littleton, CO 80162-0579

Fax: 303-978-0402  
E-mail: [selectimag@aol.com](mailto:selectimag@aol.com)

**Items for the February Rail Report should be sent by January 15th.**



BOX 2391  
DENVER, COLORADO 80201

***FIRST CLASS***

